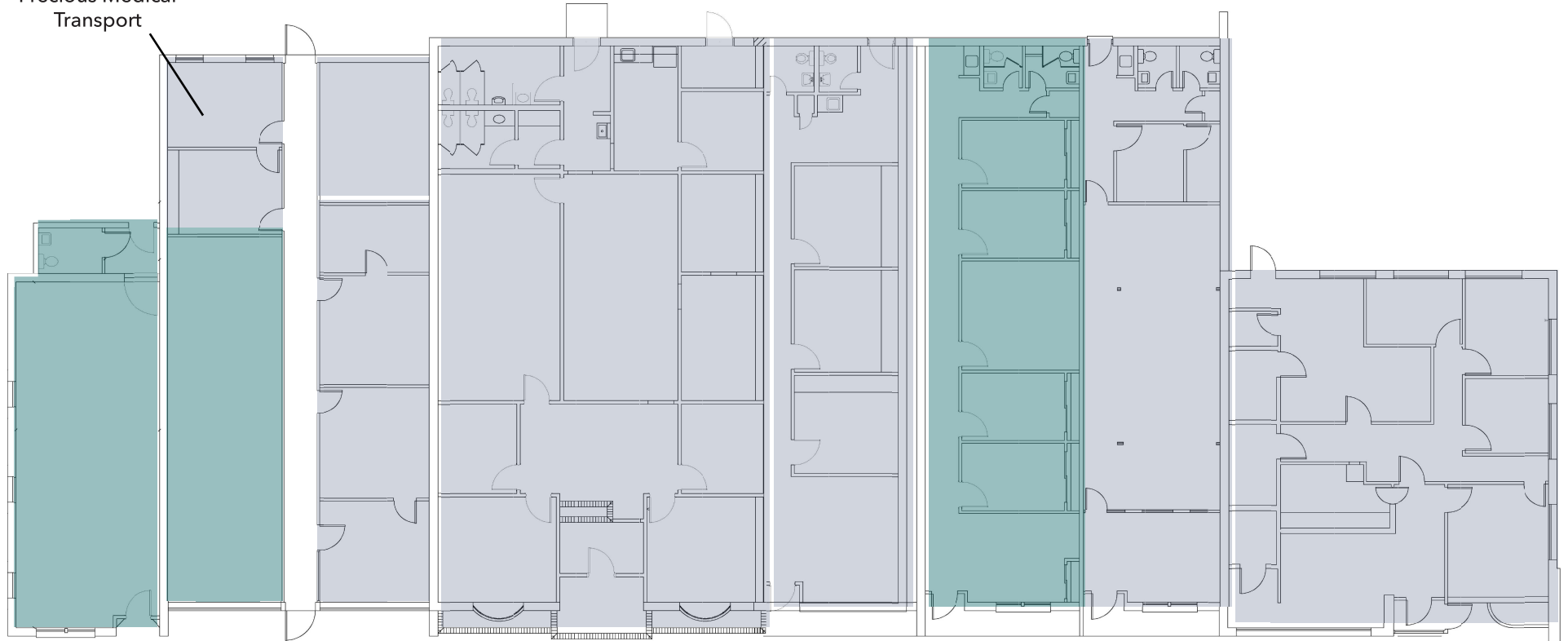


LEASED  
 AVAILABLE

1025-H  
 266 SF  
 Precious Medical  
 Transport



**1023**  
 864 SF  
**AVAILABLE**

**1025-D**  
 570 SF  
**AVAILABLE**

1025-B  
 604 SF  
 Center for  
 Healing and  
 Wellness

1029  
 2,177 SF  
 God's Word  
 Foundation

1033  
 1,200 SF  
 DREAMS Treatment  
 Services Inc.

**1037**  
 1,220 SF  
**AVAILABLE**

1039  
 1,039 SF  
 Byron L. Griffin

1041  
 1,577 SF  
 Halcyon Resource  
 Group Inc.

**1023-1041 E. WENDOVER AVE.**  
**BETWEEN US-29 AND SUMMIT AVE.**  
**GREENSBORO, NC**

**KOURY**  
 CORPORATION  
 BUILDER & DEVELOPER

2275 VANSTORY STREET  
 GREENSBORO, NC 27403  
 336.299.9200