

215 EAST JJ DRIVE Greensboro, NC

Interstate Industrial Park

Travis Carter, CCIM
336.255.4693
tcarter@kourycorp.com

Mike Longmore
704.749.4880
mlongmore@kourycorp.com

336.299.9200
KOURYCORP.COM



168,000 SQUARE FOOT MODERN SPECULATIVE INDUSTRIAL BUILDING
63,200 SF AVAILABLE

KOURY
CORPORATION
BUILDER & DEVELOPER

SITE FEATURES

- Interstate Industrial is a 71-acre master planned industrial development strategically located along Interstates I-40 and I-85 Business, US Highways 220, 29 and 421 which are accessed one block away from the development's entrance positioned at the intersection of South Elm Eugene Street and East JJ Drive.
- In addition to the sites superior regional access, It's location also provides efficient access anywhere in Greensboro being only 2.3 miles from Downtown Greensboro and access to the Greensboro Urban Loop (I-840) is within just minutes.

BUILDING SPECIFICATIONS

TOTAL BUILDING SIZE TOTAL AVAILABLE CEILING HEIGHT

+/- 168,000 sq ft
(840' x 200)

+/-10104,800 4sq ft

32' Clear Height

COLUMN SPACING DOCK HIGH DOORS PARKING

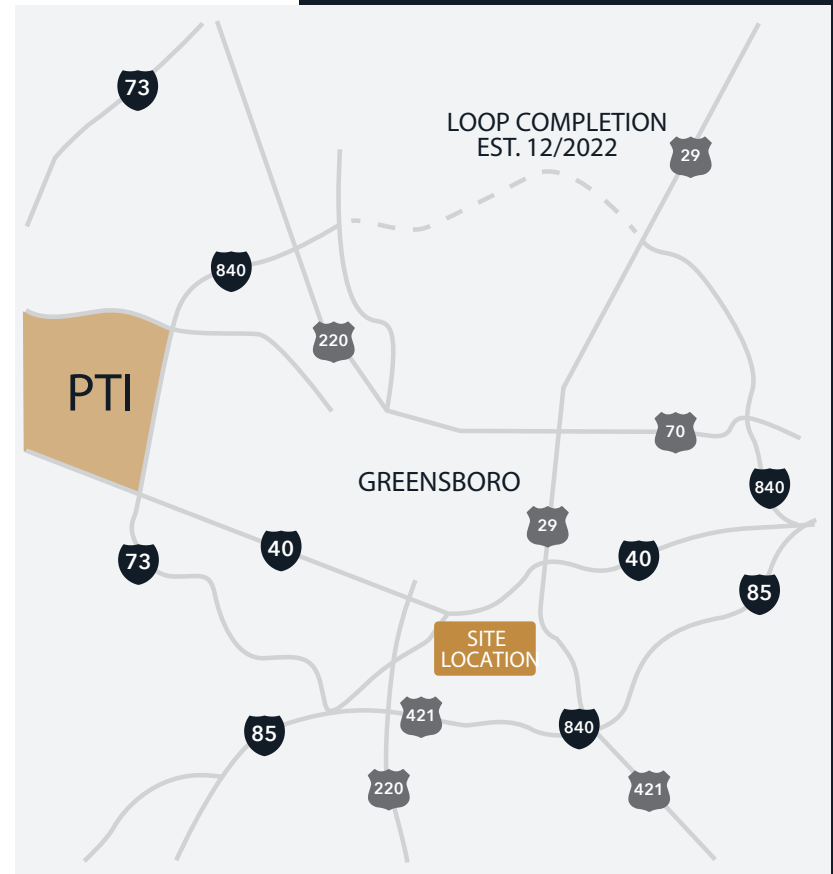
48'x52' (60' x 52' at docks)


Up to 44 (9' x 10') available 59 spaces

DRIVE-IN DOORS SPRINKLERS

2 (12' x 14') available

ESFR





DESTINATION DRIVE TIME

PTI	16 min
RDU	1 hr
CLT	1 hr 25 min



WORKFORCE DRIVE TIME

57,786	10 min
204,536	20 min
383,702	30 min



PORTS WITHIN 300 MILE

- Wilmington City, NC - 215
- Morehead City, NC - 230
- Norfolk, VA - 240
- Charleston, SC - 285

INTERSTATE INDUSTRIAL PARK

Travis Carter, CCIM
336.255.4693
tcarter@kourycorp.com

Mike Longmore
704.749.4880
mlongmore@kourycorp.com



INTERSTATE INDUSTRIAL PARK

86 acre in-fill site with 168,000 sq ft of existing warehouse space at the intersection of I-40 & S Elm Eugene St.

NEW CONSTRUCTION -

-94,160 Sq ft Industrial Building -46,333 SF Available -2933 S. Elm St.

EXISTING CONSTRUCTION -

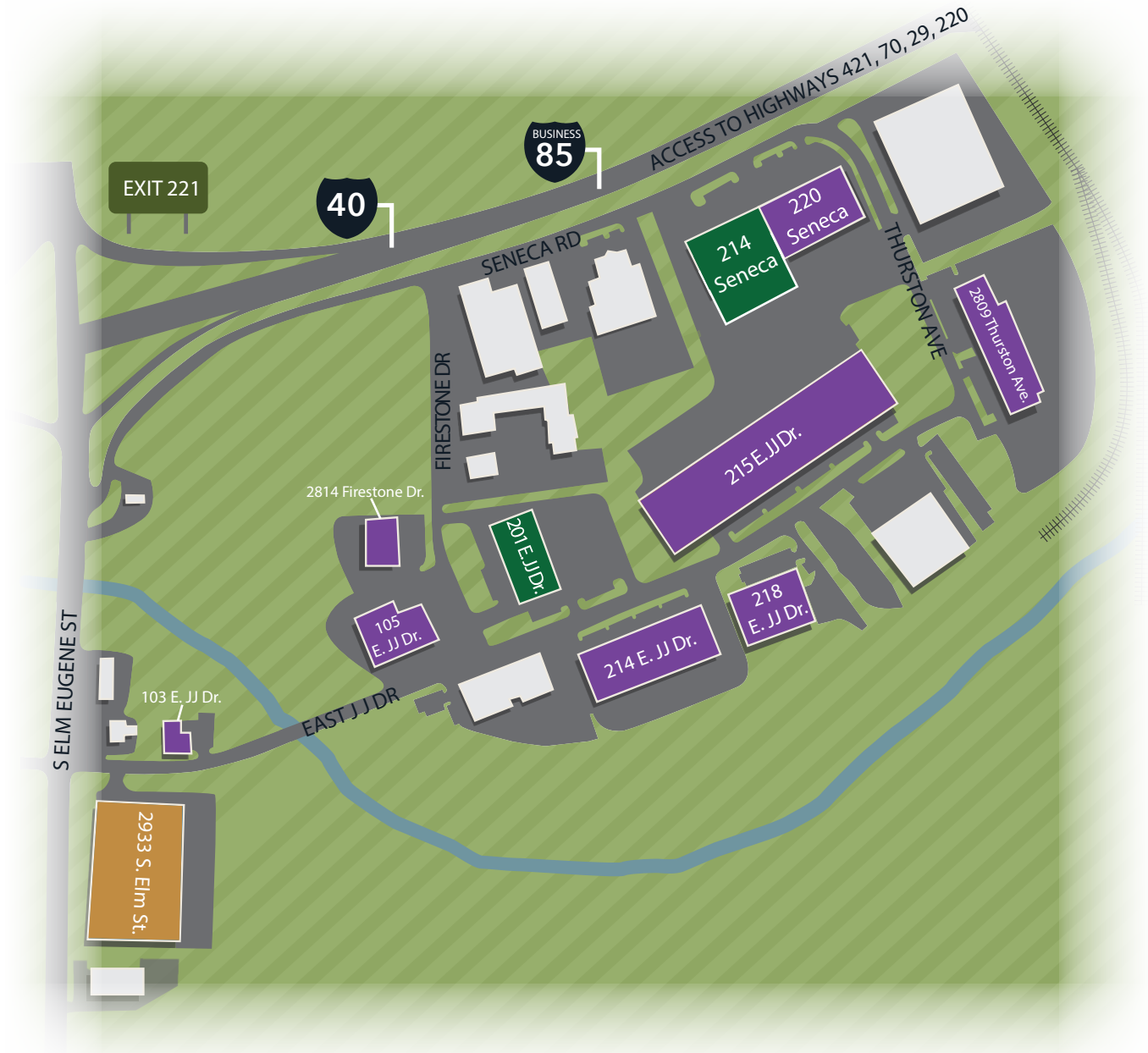
- 6,670 Sq ft Industrial Building - 103 E. JJ Dr.
- 14,100 Sq ft Industrial Building - 105 E. JJ Dr.
- 63,791 Sq ft Industrial Building - 214 E. JJ Dr.
- 168,000 Sq ft Industrial Building (fully leased) - 215 E. JJ Dr.
- 40,318 Sq ft Industrial Building - 218 E. JJ Dr.
- 61,500 Sq ft Industrial Building (fully leased) - 220 Seneca Dr.

FUTURE CONSTRUCTION -

- Up to 51,100 Sq ft Available for future development - 201 E JJ Dr.
- Up to 93,000 Sq ft Available for future development- 214 Seneca Dr.

BUSINESSES IN INTERSTATE INDUSTRIAL PARK

- Sherrill Tree
- Hyfab
- D&L Parts
- Kyrie Global
- Summit Credit Union
- Lamar
- The Fresh Market
- Greensboro News & Record
- SISC
- Nutricost
- Aramark
- NB Handy
- Daltile
- Norandex
- Blue Line Distribution
- Parish Tire & Automotive
- Best Distributing Co
- Beard Hardwoods
- Associated Material
- Carolina Biological
- Slifko Electric

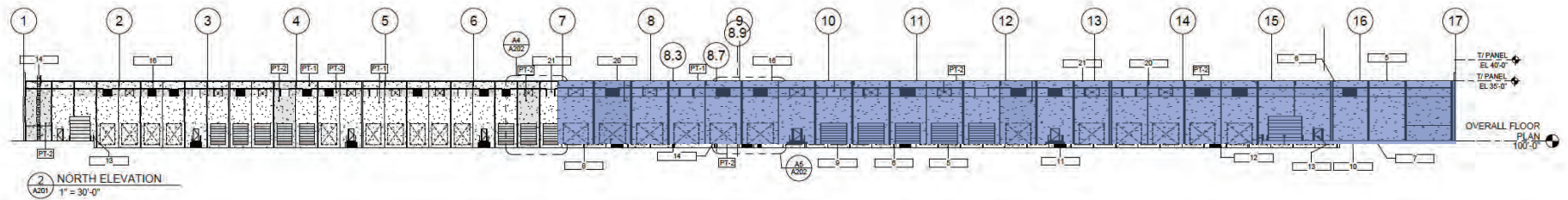
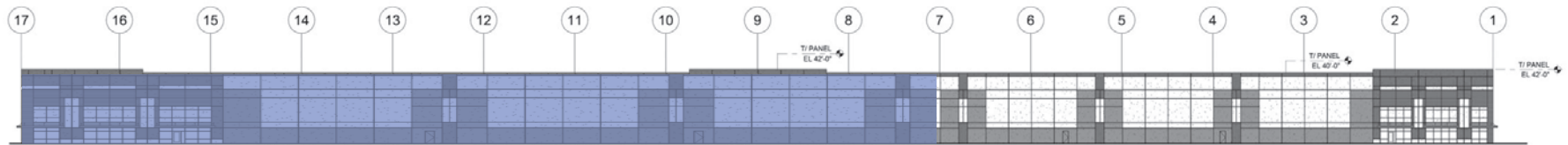
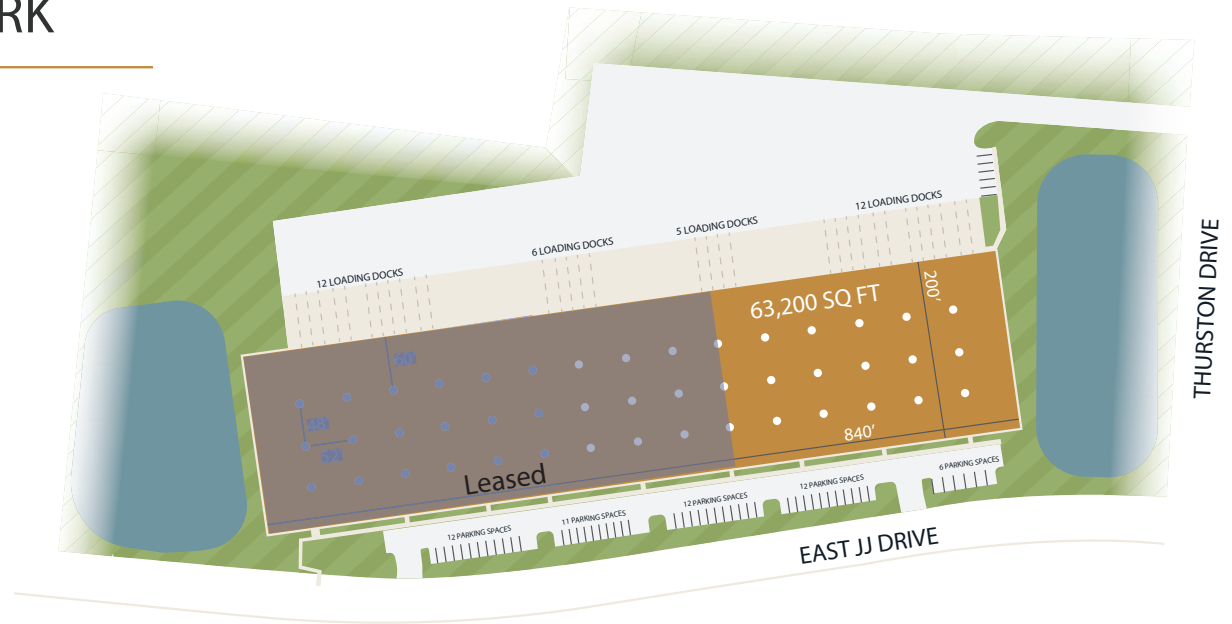


INTERSTATE INDUSTRIAL PARK

Travis Carter, CCIM
 336.255.4693
 tcarter@kourycorp.com

Mike Longmore
 704.749.4880
 mlongmore@kourycorp.com

 Leased Space





triad design group
ARCHITECTURE ENGINEERING INTERIOR DESIGN

Triad Design Group, P.C.
4807 - C Koger Boulevard
Greensboro, NC 27407
Telephone 336-218-8282
Facsimile 336-218-8010
www.triad-designgroup.com
NC Architecture Reg. 50709
NC Engineering Lic. C-1108

PRELIMINARY

This drawing and the design herein, as an instrument of service, is the property of Triad Design Group, P.C. and shall remain the confidential property of Triad Design Group, P.C. and shall not be used, copied, or reproduced in any form without the express written consent of Triad Design Group, P.C. All rights reserved.

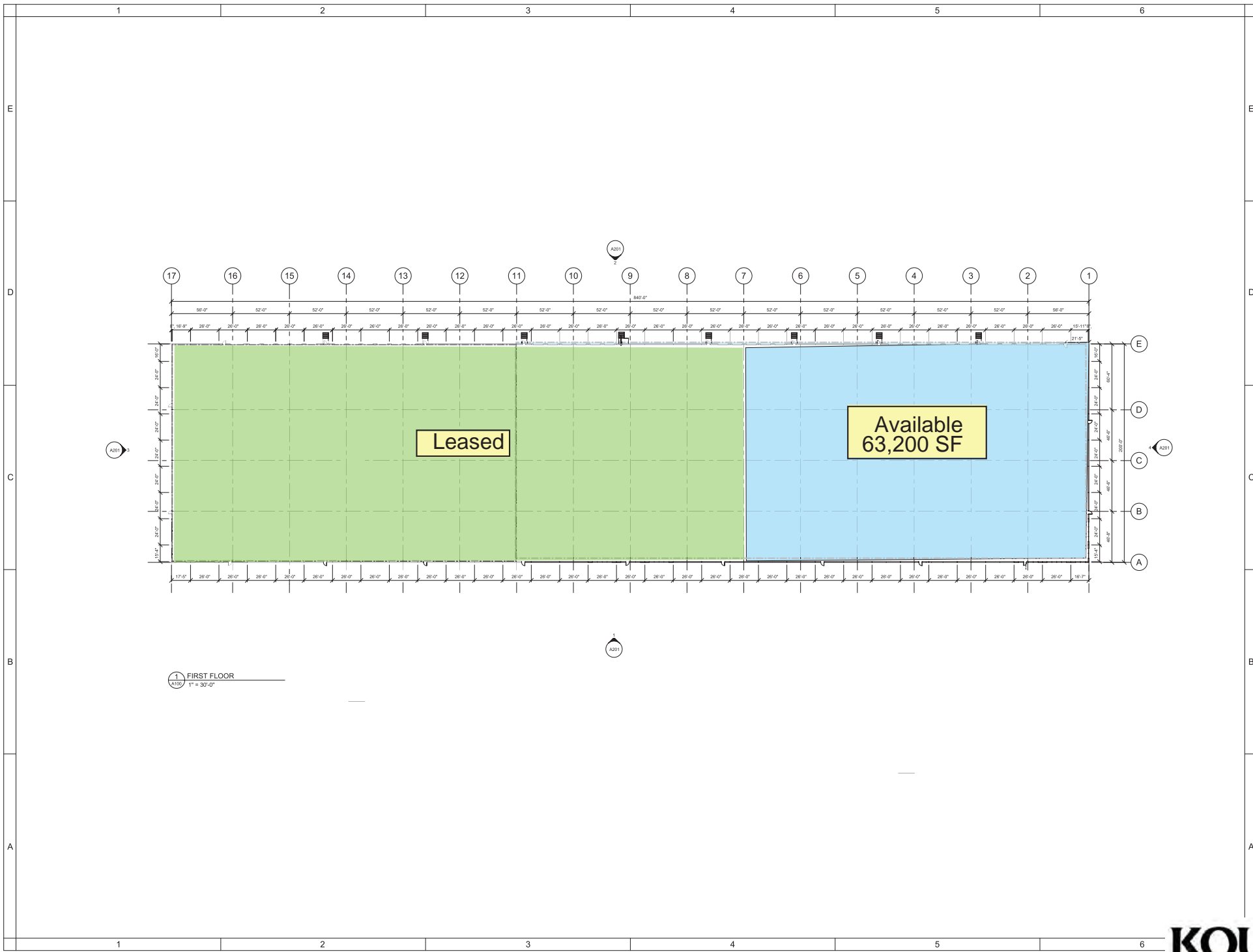
215 JJ Drive
Shell Building
215 JJ Drive
Greensboro, NC 27406

SUBMITTALS:	
DATE	DESCRIPTION

REVISIONS:		
NO.	DATE	DESCRIPTION

SHEET TITLE:
Overall Floor Plan

DATE: November 17, 2020
SWF | Checker



KOURY
CORPORATION
BUILDER & DEVELOPER