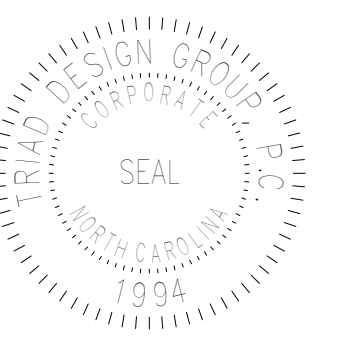




triad design group
ARCHITECTURE | ENGINEERING | INTERIOR DESIGN

Triad Design Group, P.C.
4807 - C Koger Boulevard
Greensboro, NC 27407
Telephone 336-218-8282
Facsimile 336-218-8010
www.triad-designgroup.com

NC Architecture Reg. 50709
NC Engineering Lic. C-1108



PRELIMINARY

This drawing and the details herein, as an instrument of service, is the property of Triad Design Group, P.C. It may be used only for the specific project, and shall not be loaned, copied, or reproduced in any form without expressed written consent from Triad Design Group, P.C. Copyright 2020. Triad Design Group, P.C. All rights reserved.
Triad Design Group, P.C. shall not be responsible for construction means, methods, techniques, or procedures utilized by the contractor, nor for the safety of public or contractor employees, nor for the failure of the contractor to carry out the work in accordance with the contract documents.

215 JJ Drive
Shell Building
215 JJ Drive
Greensboro, NC 27406

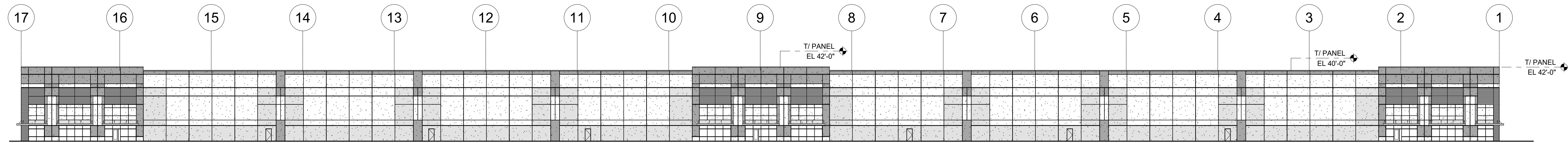
SUBMITTALS:	
DATE	DESCRIPTION

REVISIONS		
NO	DATE	DESCRIPTION

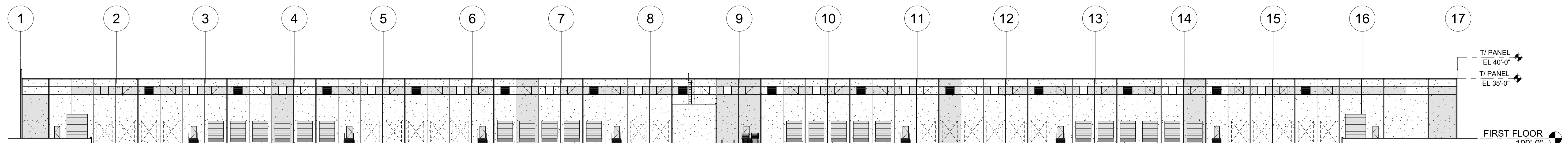
SHEET TITLE:
Building Elevations

DATE: December 15, 2020
SWF
JOB NUMBER: 20-102
SHEET:

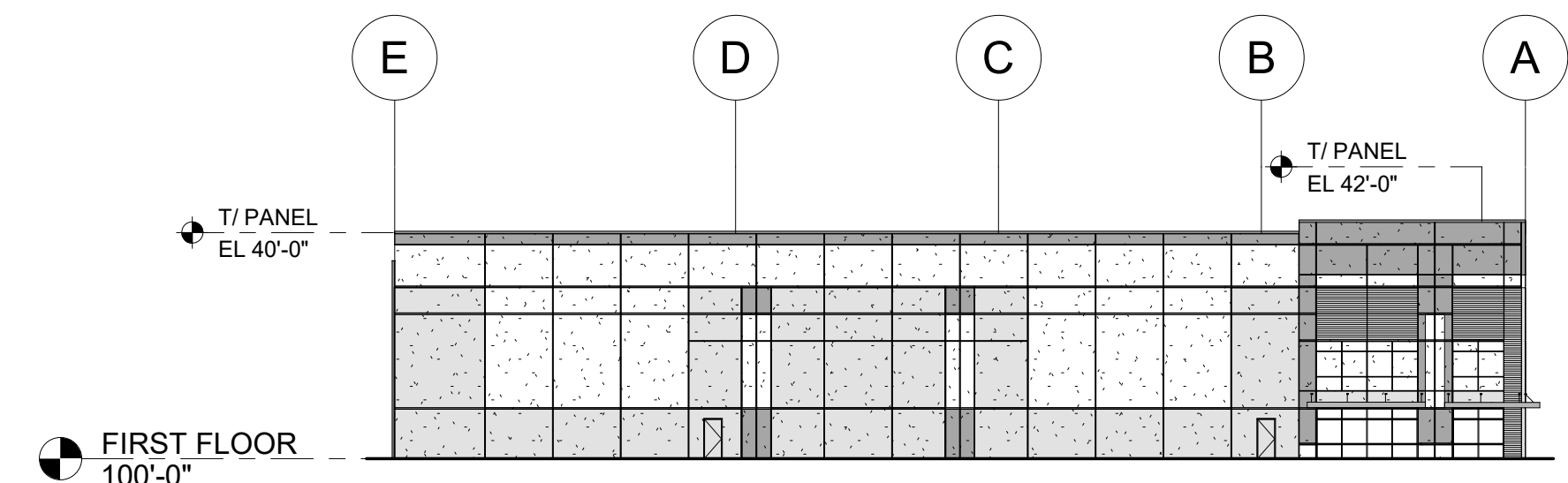
A201



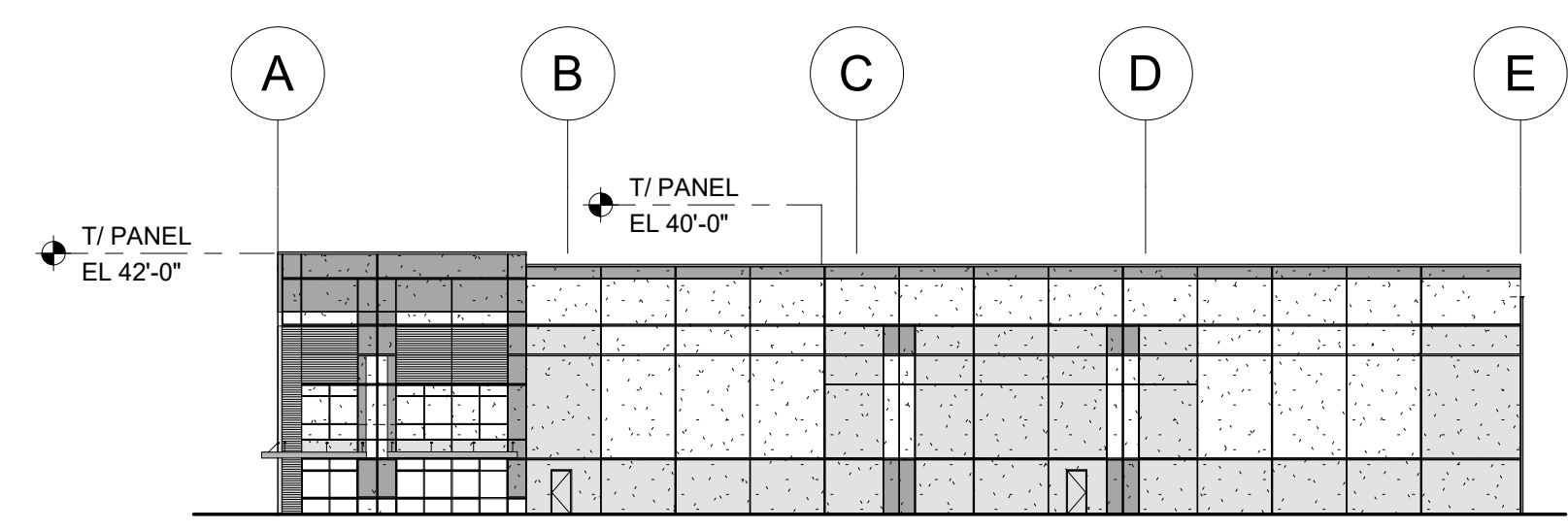
1 SOUTH ELEVATION
A201 1" = 30'-0"



2 NORTH ELEVATION
A201 1" = 30'-0"



3 WEST ELEVATION
A201 1" = 30'-0"



4 EAST ELEVATION
A201 1" = 30'-0"

1

2

3

4

5

6

E

E

D

D

C

C

B

B

A

A

1

2

3

4

5

6