

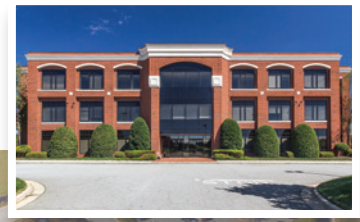


Be a part of the Grandover Community

4620

Grandover Pkwy

- 10,000 sq ft - 73,828 sq ft
- 25,000 sq ft open floor plan
- 3 Floors available



4510

Weybridge Ln

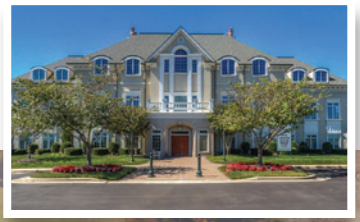
- 4,000 sq ft to 33,234 sq ft available
- 1 to 3 floors available
- Outdoor patio faces golf resort



4508

Weybridge Ln

- 5,000 sq ft to 17,299 sq ft
- Top floor available



Community with Convenience

Your business deserves

4508, 4510 Weybridge Lane
4620 Grandover Parkway
Greensboro, North Carolina 27407

4,000 TO 73,828
Sq Ft TO Sq Ft

Built to suit opportunities

Located In **Grandover Commons**

Property Features

- Directly off interstate I-85 with access to the entire Triad market within 30 minutes with a population of ±800,000
- One exit from interstates 73 & 840 which provides direct access to interstate 40 & the Piedmont Triad International Airport
- Part of the 1,400 acre Grandover mixed use development comprising of class A office, world class resort & hotel, retail/entertainment, 2 golf courses & residential community
- Spectacular views of the Grandover Resort and the Grandover east golf course. Park includes existing corporate users such as ACC headquarters, The NC Association of Realtors, TCDI & Global Brands Group

Shovel Ready Sites

- From 9.64 Acres to 42+ Acres

Class "A" Office Community

- You are here
- Directly next to Grandover Resort
- Minutes from I-840
- Directly off interstate I-85
- Minutes from I-40
- Only one exit from I-73
- Minutes from US-421



- Surrounded By:**
- Top Rated Schools
 - Established Neighborhoods
 - Retail Shops & Entertainment



336.299.9200
www.kourycorp.com

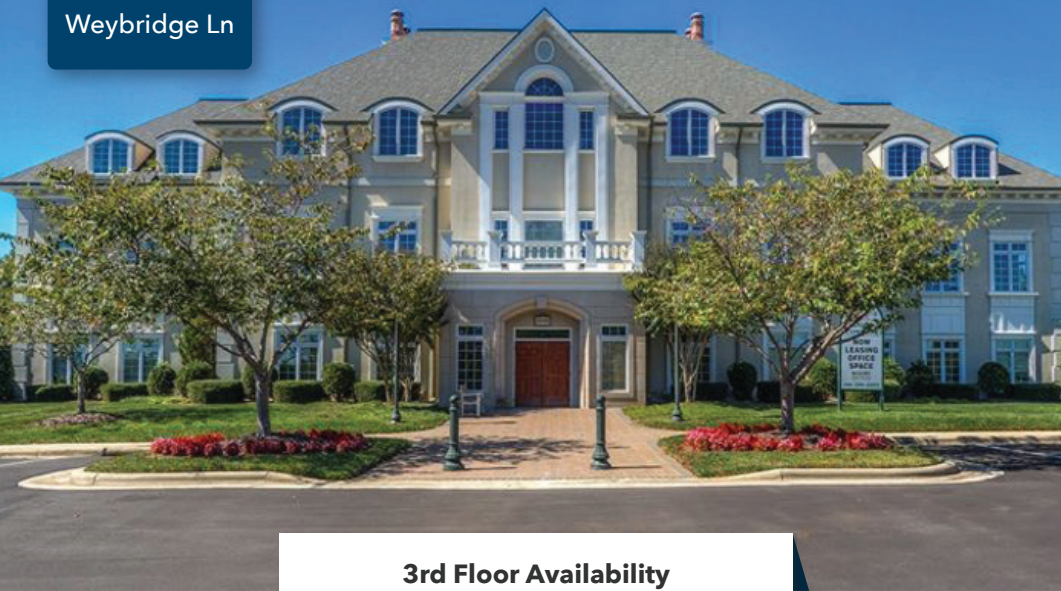
KOURY
CORPORATION
BUILDER & DEVELOPER

Mike Longmore
Mobile: 704.749.4880
mlongmore@kourycorp.com

Travis Carter, CCIM
Mobile: 336.255.4693
tcarter@kourycorp.com

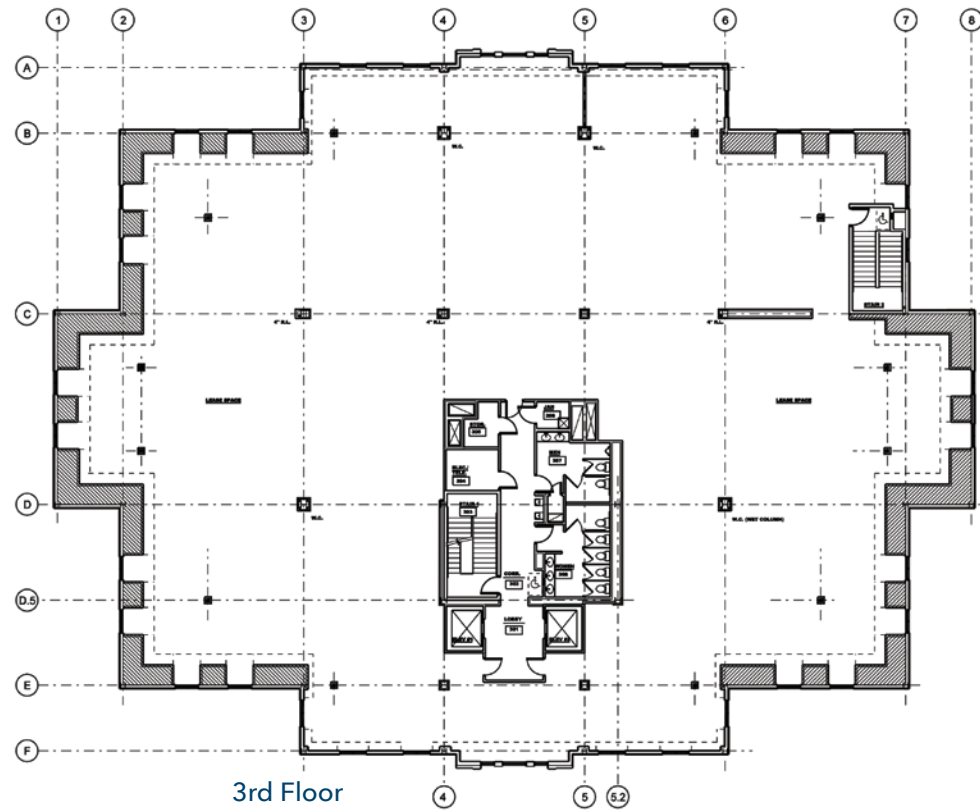
4508

Weybridge Ln



3rd Floor Availability

Full service Lease
4,000 Square Ft to 17,299 Square Ft



3rd Floor

Master planned suburban office park located within the upscale Grandover mixed-use community overlooking the 15th fairway of the Grandover east golf course.

4510

Weybridge Ln



All Floors Available

Full service Lease
9,976 Square Ft to 33,234 Square Ft



1st Floor

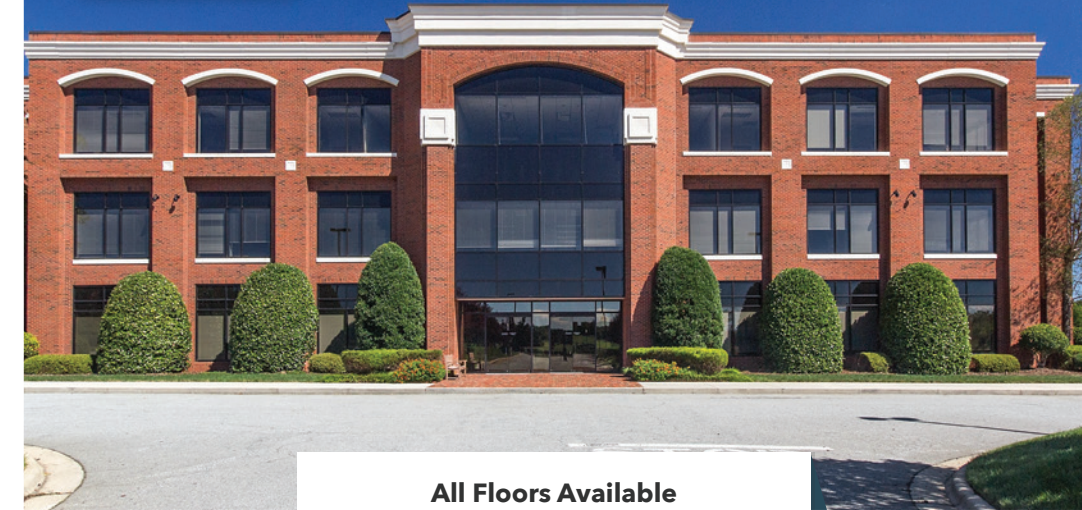
2nd Floor

3rd Floor

One of Greensboro's premier office buildings overlooking the 15th hole of the Grandover east golf course.

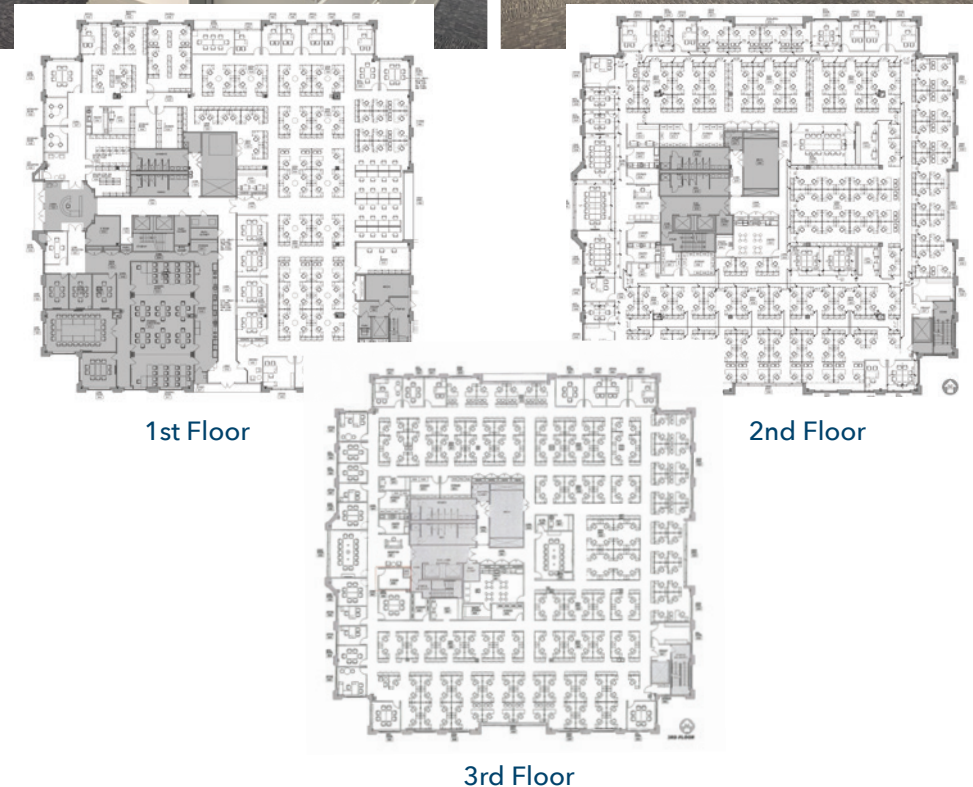
4620

Grandover Pkwy



All Floors Available

Full service Lease
10,000 Square Ft to 73,828 Square Ft



1st Floor

2nd Floor

3rd Floor

This stunning building is situated alongside the 16th hole of the Grandover East golf course.