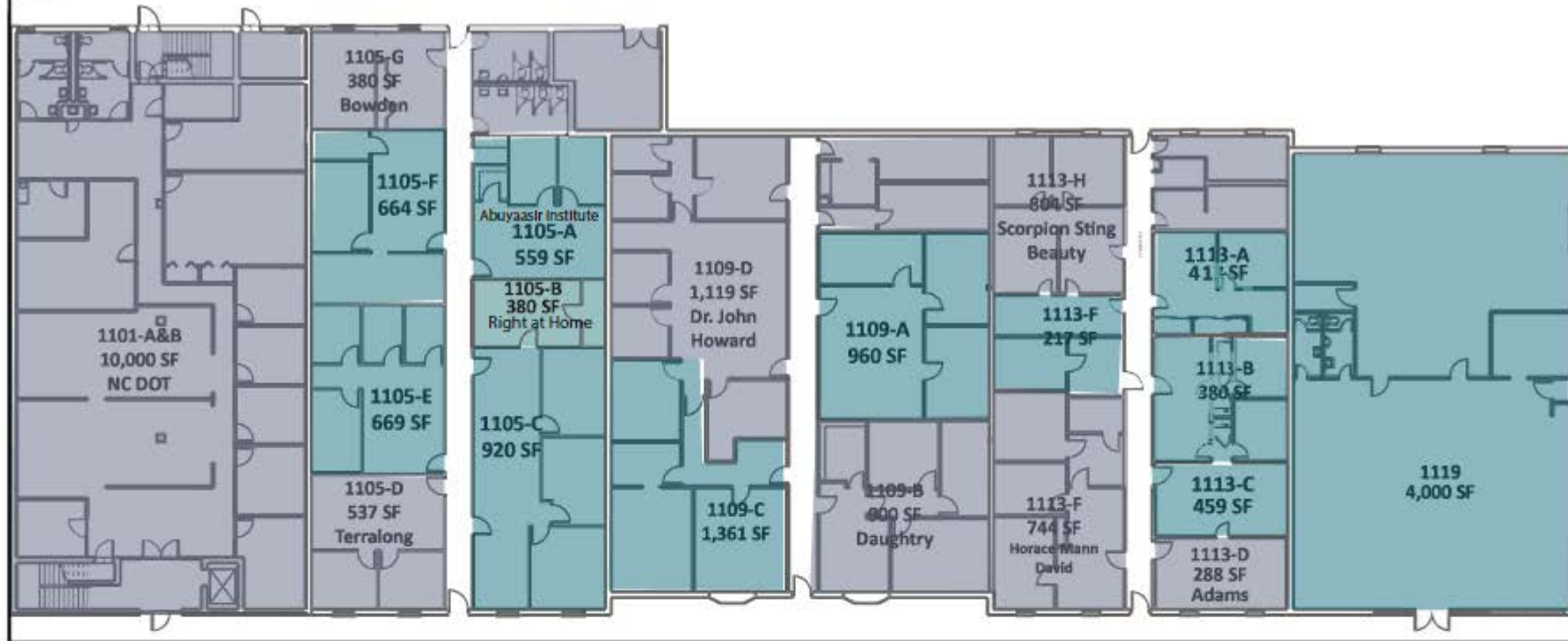


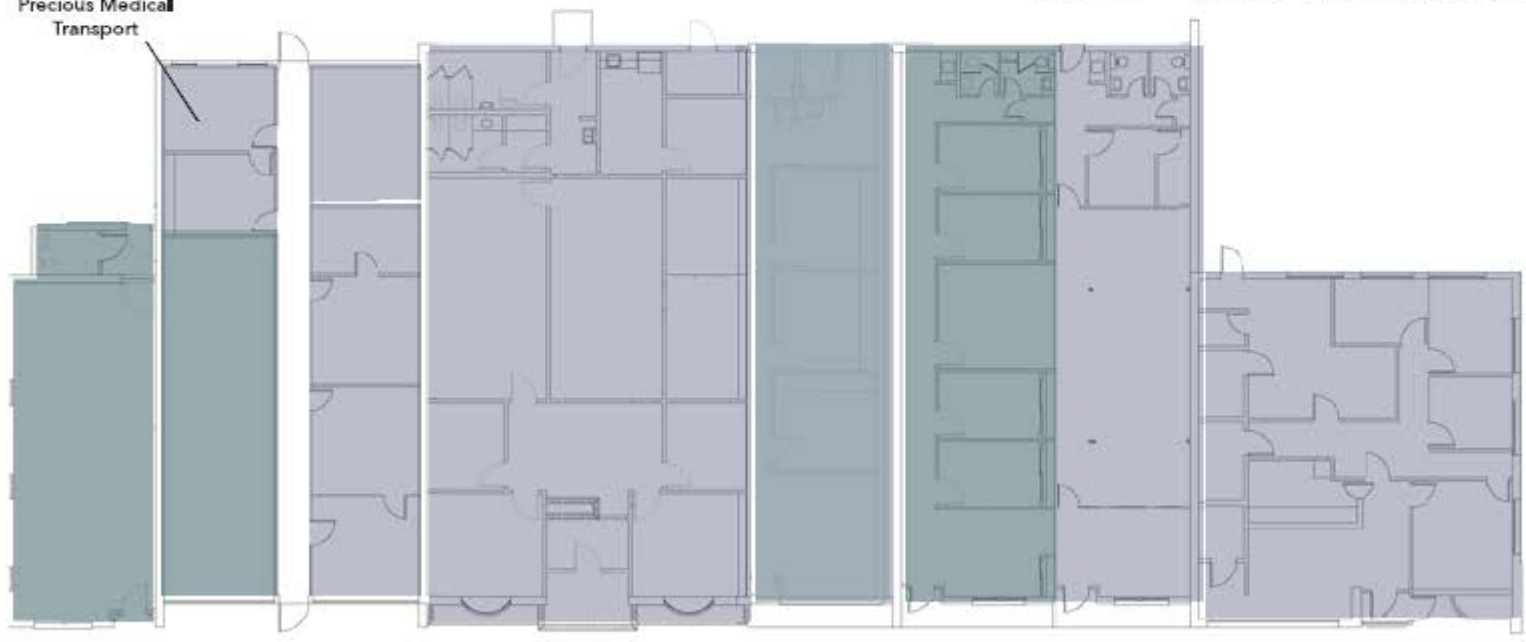
# 1101 - 1119 E. Wendover Ave.

LEASED  
AVAILABLE



# 1023 - 1041 E. Wendover Ave.

1025-H  
266 SF  
Precious Medical Transport



1023 864 SF AVAILABLE  
 1025-D 570 SF AVAILABLE  
 1025-B 604 SF Center for Healing and Wellness  
 1029 2,177 SF God's Word Foundation  
 1033 1,200 SF AVAILABLE  
 1037 1,220 SF AVAILABLE  
 1039 1,039 SF Byron L. Griffin  
 1041 1,577 SF Halcyon Resource Group Inc.

336.299.9200  
KouryCorp.com



Chris O'Leary • 336.382.1208 • [coleary@kourycorp.com](mailto:coleary@kourycorp.com)  
 Travis Carter, CCIM • 336.255.4693 • [tcarter@kourycorp.com](mailto:tcarter@kourycorp.com)